

## INVESTMENT HIGHLIGHTS

### TEAM

Highly-technical team of mine-finders with strong capital market expertise.

### JURISDICTION

Exploring Australia's mining-friendly, world-class Au and Au-Cu rich districts.

### PROJECTS

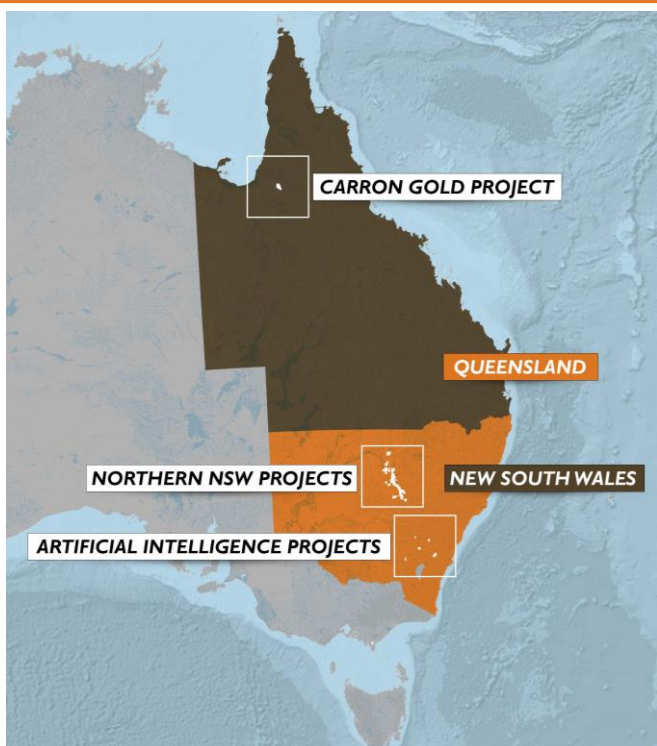
**100% OWNED**  
District scale land positions in NSW. Largest holder of exploration licenses & applications in the Lachlan Fold Belt.

### DISCOVERY READY

Twenty large, drill-ready Au and Au-Cu targets in the Northern Lachlan Fold Belt.

### SHAREHOLDER ALIGNMENT

Management and insiders have substantial ownership.



## INFLECTION PROJECTS

### Northern NSW Projects

- Targeting large, undercover Au & Au-Cu deposits in the northern extension of the Lachlan Fold Belt (LFB) in NSW. Inflection has identified 20 large drill-ready targets, all 100% owned.

### Carron Gold Project

- Targeting high-grade gold along strike from the historic Croydon Goldfields in Queensland. The Company controls 30 km of untested NW trending structures. 11 high-priority drill targets.

### Artificial Intelligence Projects

- Using Artificial Intelligence (AI) technology to identify new mineral deposits in the data rich southern LFB. Follow up work by the Company has identified a number of high priority targets.

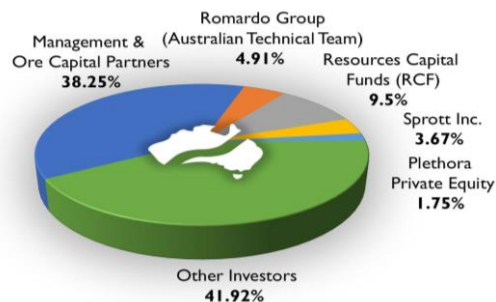
## WHY NSW AND THE LACHLAN FOLD BELT?

- Australia's foremost Au & Au-Cu porphyry belt.
- New South Wales is pro-mining with an exceptional mining culture.
- The Macquarie Arc in the Lachlan Fold Belt is home to several world-class mines, including: **Cadia – Newcrest, Cowal – Evolution Mining, Northparkes – CMO**
- Massive quantity of quality pre-competitive geological data compiled by government of NSW and Geoscience Australia.

## CAPITAL STRUCTURE

Trading symbol:  
CSE: **AUCU**

Shares outstanding:  
57,163,184

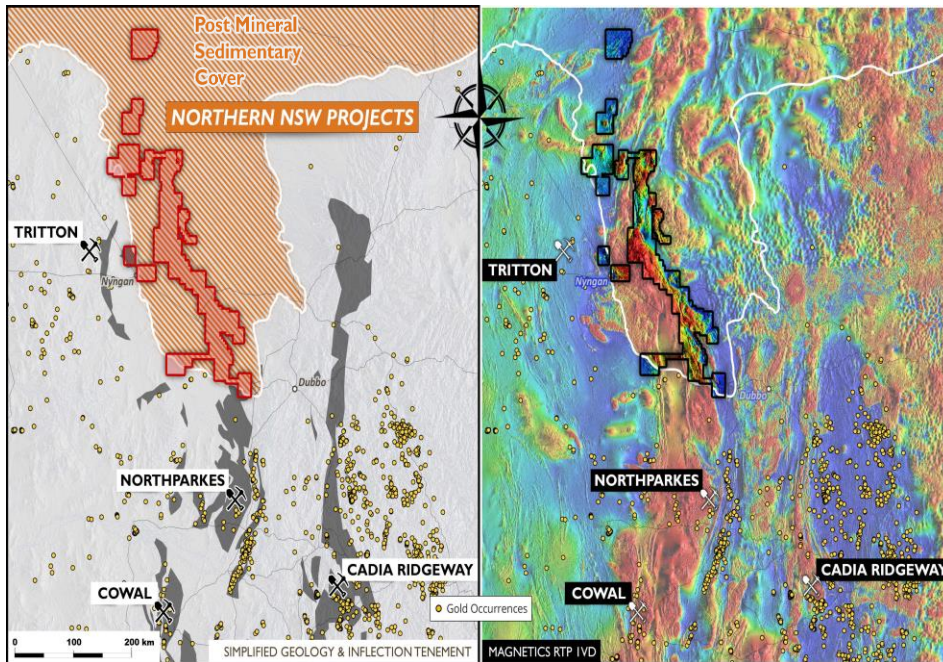


Warrants and options outstanding

- 22,490,000 warrants - \$0.30-0.40
- 3,990,000 options - \$0.20-0.30
- 1,680,000 broker options and warrants - \$0.25-0.40

## Northern NSW Projects

- Inflection's technical team has identified 20 drill-ready targets, all 100% owned.
- Targets were generated using high-quality pre-competitive data compiled by the government of NSW including airborne magnetics which was completed on 400-meter spaced flight lines.
- Inflection completed an airborne magnetic survey over the individual targets at 100-meter spacing and constructed a geological model for each.
- Inflection will systematically drill-test the targets with a first-pass drill program.
- Large portfolio of major targets covered by 19 exploration licenses and applications totaling over 500,000 ha.
- Inflection is the biggest owner of exploration tenements in the northern Lachlan Fold Belt in NSW.



## Carron Gold Project

- Carron Gold Project – Queensland
- Exploring for high-grade orogenic vein and intrusion related gold systems analogous & along trend from the Croydon Goldfields.
- Croydon is one of Queensland's significant gold camps with >1Moz Au production with historic average grades of 35 g/t Au\* widely reported.
- Project generated by northern NSW technical team led by Dr. Douglas Haynes.
- Multiple high-grade targets over ~30 km – Never drill tested.
- Targets lie under shallow sedimentary cover estimated to be ~30–100 m thick.

## AI Projects

- AI and machine learning reduces exploration risk by increasing the efficiency of exploration in data rich environments such as NSW.
- Artificial Neural Networks used for predictive modeling. Algorithms identify and predict hidden patterns and trends in verified, complex and seemingly unrelated data.
- Process predicts likelihood of mineralization in specific areas.
- Study generated a number of targets on license free ground.
- Inflection has built portfolio of 100% owned Exploration Licenses covering several key areas of interest

\*Van Eck M, Child R 1990 – Croydon Gold deposits: in Hughes F E (Ed.), 1990 Geology of the Mineral Deposits of Australia & Papua New Guinea The AusIMM, Melbourne Mono 14, v1 pp 979-982

## MANAGEMENT & BOARD

### Wendell Zerb - Chairman

Senior roles with Canaccord Genuity Corp. and PI Financial. Most recently President & CEO of Exeter Resource Corp.

### Alistair Waddell – President, CEO & Director

Founder and former CEO of GoldQuest Mining Corp., VP of Global Greenfields Exploration, Kinross Gold and Chairman of Headwater Gold.

### Carl Swensson – VP Exploration

Geologist with over 30 years of global experience in mineral exploration and resource assessment. Former Chief Geologist, Normandy Mining.

### Dr. Stuart Smith - Non-Exec. Director

Former Technical Director – Strategy & New Projects as well as Specialist – Global Copper for Teck Resources Ltd.

### Tero Kosonen - Non-Exec. Director

Co-Founder of Ore Capital Partners, a private equity/venture capital group.

### Cecil Bond - Non-Exec. Director

Chartered Accountant and former CFO of Exeter Resource Corp.

## AUSTRALIAN TECHNICAL TEAM

### Dr. Douglas Haynes

Geologist with 40 years of global experience and former Chief Scientist for WMC and Chief Geologist, Business Development for BHP.

### Mark Dugmore

Formerly Exploration Manager, Global Base Metals for BHP with personal discovery record of >2Moz gold.

### Dr. Darryn Hedger

Geologist with over 30 years of global experience and former Senior Geochemist for BHP.

### Bob Skrzeczynski

Geologist with 40 years of global experience and former Senior Manager for BHP.